

FREE



HEAPHY TRACK



Duration: 4–6 days
Distance: 78.4 km (one way)



Great Walks season:
All year



greatwalks.co.nz

Department of
Conservation
Te Papa Atawhai

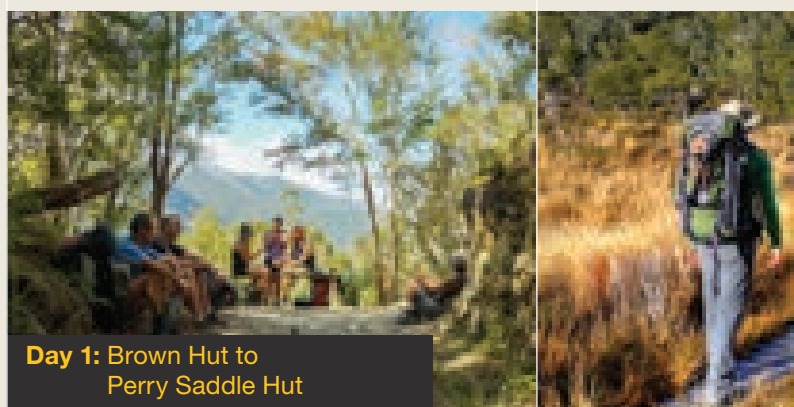
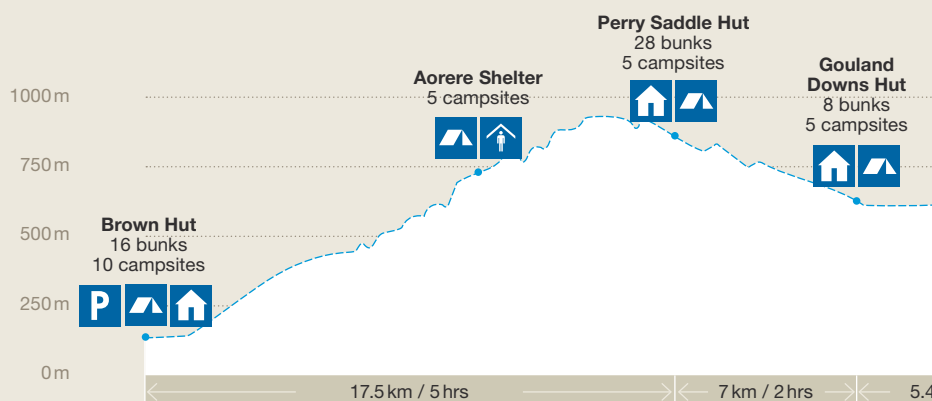
HEAPHY TRACK

IF IT'S VARIED and rugged landscapes with mountain views you're looking for, you'll be spoilt for choice on the Heaphy Track.

Retrace the steps of early Māori seeking pounamu (greenstone) and 19th century gold prospectors. You'll pass through expansive tussock downs, lush forests and nīkau palms before reaching the roaring seas of the West Coast. Tackle the track in 4 or 5 days, or take your time and soak up the views over 6 days. There is a popular 2-day, overnight return trip on the western side from Kōhahai to Heaphy Hut. You can also mountain bike the track during the mountain biking season and it is a 2-3 day ride.

The Heaphy Track in Kahurangi National Park can be walked in either direction. The track is well marked and signposted, but some sections may be steep and rough and the track could be muddy. This guide describes a 4-day hike for independent, non-guided walkers travelling from Brown Hut to Kōhahai.

ELEVATION PROFILE & TRACK GUIDE



Day 1: Brown Hut to Perry Saddle Hut

➤ 5 hours, 17.5 km

As you wind your way through bush you'll climb gradually, following a route once surveyed for a road. It's 4 hours to Aorere Shelter, which affords views of Aorere valley and, on clear days, Mount Taranaki/Egmont. A short track about 30 minutes before Perry Saddle Hut leads to a stunning viewpoint at Flanagans Corner, the highest point on the track at 915 metres.

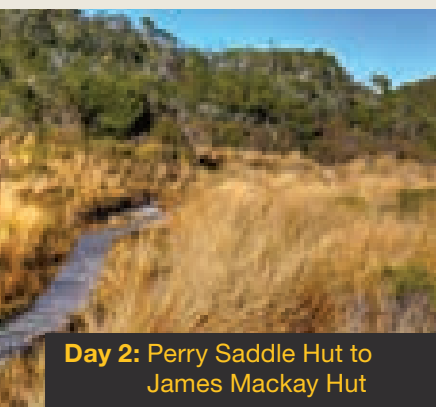
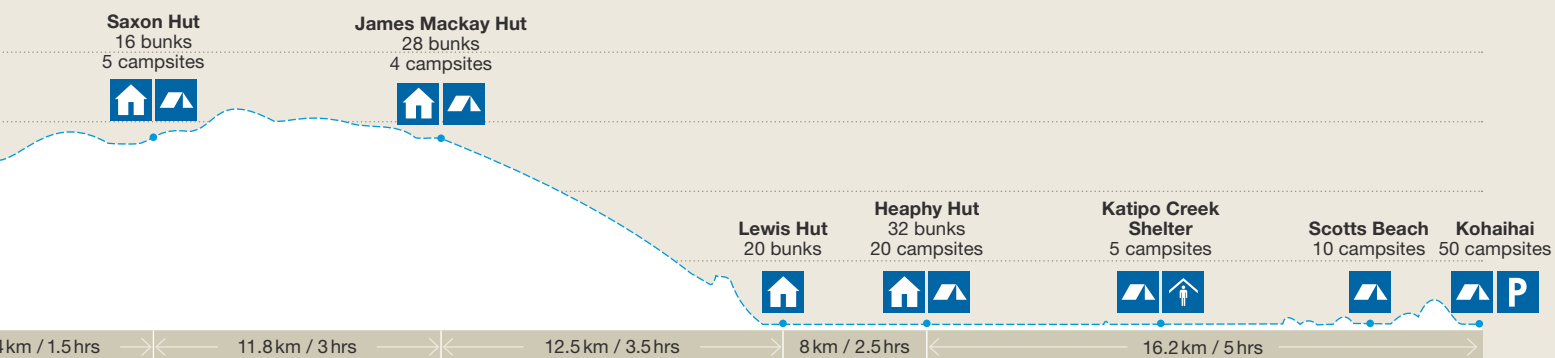


Duration: **4–6 days**
Distance: **78.4 km (one way)**

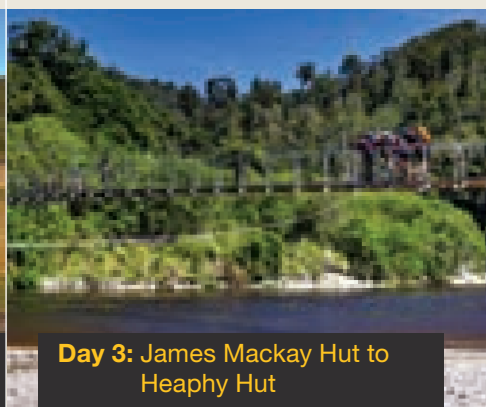


Great Walks season:
All year





Day 2: Perry Saddle Hut to James Mackay Hut



Day 3: James Mackay Hut to Heaphy Hut



Day 4: Heaphy Hut to Kōhahai River mouth

6 hours 30 minutes, 24.2 km

Start your day sidling through tussock clearings and patches of beech. Where the valley widens, the expansive tussocklands of Gouland Downs are revealed.

You'll pass the famed pole where walkers before you have tied their old boots on your way to Gouland Downs Hut. Rest up here, or continue on to James Mackay Hut, which offers views of the Tasman Sea and Heaphy River mouth 750 metres below.

6 hours, 20.5 km

Beech forest gives way to nīkau palms as you descend to the Heaphy River and Lewis Hut, where you'll encounter the infamous West Coast sandflies.

The track then crosses the Heaphy River and takes you through a forest of kahikatea, rimu and rātā - be aware that in heavy rain, especially at high tide, sections of the track may be prone to flooding. Towards the river mouth, nīkau palms become more common, and the roar of the ocean on the wild West Coast grows louder.

5 hours, 16.2 km

On your final day the track south to Kōhahai follows the rugged coastline of the West Coast, and passes through forests of rātā and karaka trees, vines and groves of nīkau palms. Soon Scotts Beach appears. The clearing here is a good spot to rest before climbing over Kōhahai Bluff. The track follows the bank of the Kōhahai River for 400 metres to the car park.



COVER: Swing bridge over Wekakura Creek, DOC/90 Seconds

ABOVE LEFT TO RIGHT: *Monster Valley*; *stokedforsaturday.com*; *stokedforsaturday.com*; *Baptiste Maryns*

MAIN PHOTO: Heaphy Hut, *Baptiste Maryns*

HIGHLIGHTS

1

Photo: Rob Suisted (naturespic.co.nz)

Air New Zealand partners with the Department of Conservation to help bring native birds back to the beautiful Great Walks.

AIR NEW ZEALAND 

2

Photo: Stefan and Kathrin Marks

3

Photo: Rod Morris

4

Photo: Peter Black

5

Photo: Richard Rossiter

- 1 Fantastic flora!** See huge podocarps and giant northern rātā in the lowland forest, a huge variety of alpine and subalpine species on the Gouland Downs, and karaka, ngaio and nīkau palms in the coastal forest.
- 2** Try to spy the nocturnal carnivorous land snail **Powelliphanta** around Heaphy Hut on a damp night. These native snails are the largest carnivorous snails in the world, some growing as big as a man's fist. Living mainly in the forest, they eat earthworms, sucking them up through their mouths like spaghetti!
- 3** Watch and listen for the **great spotted kiwi/roeroa**. You might not see one, but you may hear the birds calling to each other at night from the Perry Saddle, Gouland Downs and Saxon huts. Male great spotted kiwi make a shrill, repeated, drawn-out whistle of 'kiwi'. The females make a harsh, low 'churr' sound.
- 4** Walk through the **'enchanted forest'**, moss-covered beech forest set in a limestone outcrop of arches and old caves.
- 5** You may not be able to see it, but the brand new **Heaphy Hut** is located right next to one of New Zealand's oldest and most interesting archaeological sites – an ancient village situated on a nearby river bank, believed to have been settled by Polynesians in the 13th – 14th century.



GETTING THERE

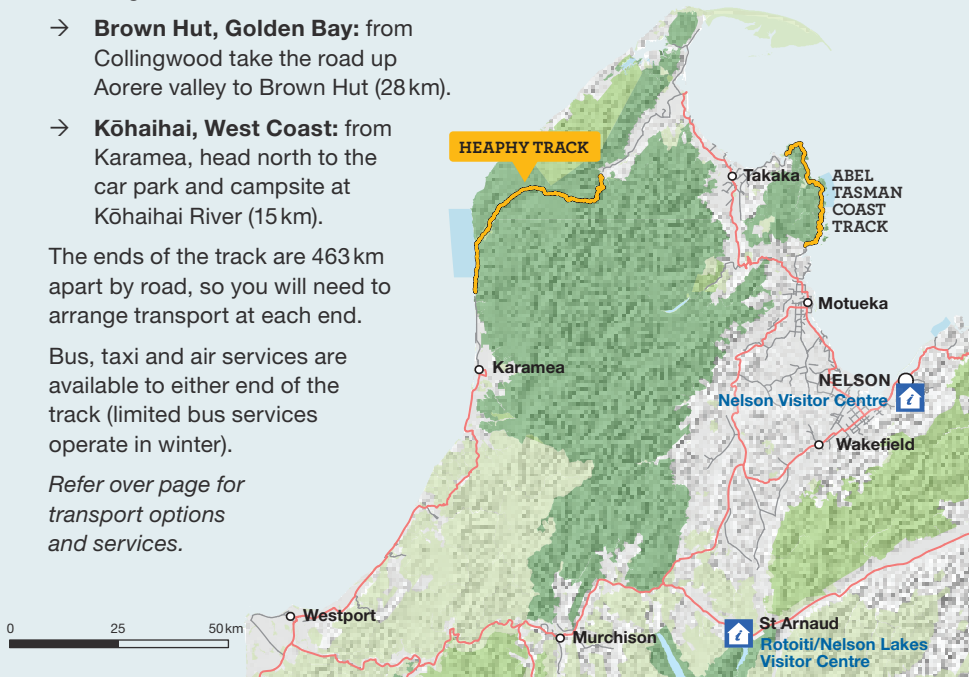
You can start the Heaphy Track from the following locations:

- **Brown Hut, Golden Bay:** from Collingwood take the road up Aorere valley to Brown Hut (28 km).
- **Kōhahai, West Coast:** from Karamea, head north to the car park and campsite at Kōhahai River (15 km).

The ends of the track are 463 km apart by road, so you will need to arrange transport at each end.

Bus, taxi and air services are available to either end of the track (limited bus services operate in winter).

Refer over page for transport options and services.



PLACES TO STAY



Photo: Baptiste Maryns

DOC operates 7 huts and 9 campsites along the Heaphy Track, which **must be booked in advance all year round**. Campers are not permitted to use hut facilities.

Kōhahai is a Standard campsite and does not need to be booked in advance. See www.doc.govt.nz/campsites for details.



Great Walks huts

\$34 per adult per night; 17 years and under free (booking required).

Huts have bunks, mattresses, a water supply, toilets, hand-washing facilities and heating with fuel. They may also have a lighting source, and basic cooking facilities with fuel. A DOC ranger may be present.



Great Walks campsites

\$14 per adult per night; 17 years and under free (booking required).

The campsites offer basic facilities including toilets, sinks and a water supply. Some also have picnic tables and cooking shelters.

Sign me up! What do I do next?



- 1 Start off at greatwalks.co.nz/heaphy for more information.



- 2 Consult tide timetables and **book your huts and campsites** online or at a DOC Visitor Centre.



- 3 **Book your transport** to and from the track – operators are listed online and in this brochure.



- 4 Buy your food and **pack your bags** – download the Great Walks packing list and make sure you have everything you need for a 6-day independent unguided walk.



- 5 Read up on **safety** and make sure you're well prepared for your journey and changeable weather at greatwalks.co.nz/heaphy. Make sure you have left your intentions with a trusted contact at adventuresmart.org.nz.



- 6 Check the weather, and make sure you've downloaded and printed your **ticket and official track guide**. You can also pick up a track guide and get the latest weather updates from the Nelson Visitor Centre.



- 7 **All set!** Lace up your boots and get hiking. Don't forget to share your experience on [facebook.com/GreatWalks](https://www.facebook.com/GreatWalks).

HEAPHY TRACK HELI TRANSFERS

www.helicoptersnelson.co.nz



REID HELICOPTERS NELSON NEW ZEALAND

Reid Helicopters service the Heaphy track for heli hiking and heli biking, catering for up to 6 passengers. We specialise in return trips from Kohaihai to Nelson. Ghost Road trips also available.

Contact us today.

256 Eight Eight Valley Rd Wakefield Nelson
admin@helicoptersnelson.co.nz
(03) 5419530 | 0212735023

HEAPHY TRACK FLIGHTS

Fly Directly into the start at Brown Hut



0800 150 338

flights@adventureflights.co.nz

www.adventureflightsgoldenbay.co.nz

Let us make your Heaphy experience unforgettable by flying over the track. Flights connecting the Heaphy Track to Karamea - Brown Hut - Takaka - Motueka - Nelson - Wellington. Catering for up to 5 passengers per flight. Calling all Bikers to Share in our World Famous Unique Bike Transportation.

Adventure Flights Golden Bay



The original guiding company, with a strong conservation focus

Join us for a wilderness adventure! All-inclusive hiking & biking tours.

www.heaphytrackguidedwalks.co.nz

BUSH AND BEYOND GUIDED TOURS
1544 Dovedale Road, RD2,
Wakefield, Nelson 7096
email: info@bushandbeyond.co.nz
phone: (03) 543 3742

Great Walkers deserve great hostels

**YHA Golden Bay,
YHA Westport
and YHA Nelson**

Affordable comfortable
accommodation pre
and post Great Walk



yha.co.nz 0800 278 299



Wifi available

ESTD
1876

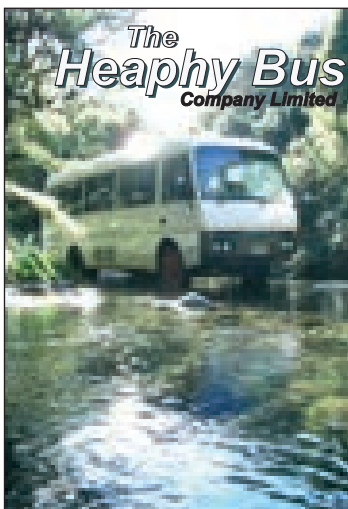
KARAMEA HOTEL

First service off the Heaphy Track
'Famous for Whitebait'
Relax & refuel in our award-winning
landmark hotel and gardens, with
separate modern accommodation.
An enduring history of country hospitality.

www.karameahotel.co.nz

KARAMEA VILLAGE HOTEL

Cr Warley Street & Wharf Road, Karamea
Phone / Fax: (03) 7826 800
Email: karameahotel@xtra.co.nz



The Heaphy Bus Company Limited

Lowest cost transport to both
ends of the Heaphy track.

- Scheduled bus
- Chartered transport
- Car relocation
- Luggage relocation
- Vehicle storage
- Abel Tasman
- Nelson Lakes
- Wangapeka

Book online or contact
www.theheaphybus.co.nz
info@theheaphybus.co.nz
ph/ fax: + 64 3 540 2042
free ph: 0800 128 735

HEAPHY TRACK HELP



www.heaphytrackhelp.co.nz

email: info@heaphytrackhelp.co.nz
phone: +64 (03) 525 9576
or 021 059 4759 (texts only)

Car relocations

Golden Bay to West Coast end or
in reverse direction. All year.
A simple solution.

Dery and Helen Kingston, 1204
Abel Tasman Drive, Ligar Bay, RD 1,
Takaka, Golden Bay, 7183



LITTLE
WANGANUI HOTEL

Come and enjoy our friendly West Coast
hospitality, providing everything from meals
to bar facilities. Numerous accommodation
options for all price ranges.

www.littlewanganuihotel.co.nz

Karamea Highway, Little Wanganui, West Coast
phone: 03 7826752



Air Charter
KARAMEA

Air Service covering the central part of New Zealand and beyond.
Biking, tramping, hunting, fishing.
The only plane based in Karamea.

Phone (03) 782 6875
or 021 029 33117

email: info@aircharterkaramea.co.nz
www.aircharterkaramea.com




Daily scheduled service/s between October and April.
Bookings essential.
We offer Private Charters on request all year round.
Book online or contact.

GOLDEN BAY COACHLINES
email: info@gbcoachlines.co.nz
phone: +64 (03) 525 8352
www.gbcoachlines.co.nz

Flights+Shuttles **Walk it-Ride it-Fly it**

- Daily services
- Great rates
- Call or book online



GOLDEN BAY AIR
goldenbayair.co.nz
0800 588 885




COMFORT, GREAT FOOD AND SERVICE

For the perfect start or finish to your Heaphy Track Adventure, experience our warm West Coast hospitality with meals, bar and accommodation to satisfy every budget. Free wifi.

LAST RESORT KARAMEA
71 Waverley Street, Karamea
email: info@lastresortkaramea.co.nz
phone: 64 3 782 6617
or 0800 505 042
www.lastresortkaramea.co.nz




HEAPHY EXPRESS

www.HeaphyExpress.com

email: transport@heaphyexpress.com
freephone: 0800 626 4222

Anytime, year round service to both ends of the track for trampers & mountain bikers.
Roundtrip from \$160 pp.
Take your bike for free.



www.HeaphyTrack.com

HEAPHY TRACK
Transport, Meals & Accommodation INFORMATION

Help planning your accommodation and transport requirements at the Karamea end of the Heaphy...
Group bookings are our speciality!
Enquiries most welcome

Contact: Paul Murray
email: Info@HeaphyTrack.com
phone: 03 7826 767 (8 am – 8 pm)

HEAPHY TRACK
Heli Shuttle



Karamea Heli Charter

SERVICING BOTH ENDS OF THE TRACK FOR HIKERS & BIKERS

www.karameahelicharter.co.nz
03 782 6111 | julie@karameahelicharter.co.nz



The only boutique luxury accommodation at the start of the Heaphy, with stunning views over scenery filmed in 'The Hobbit'.

www.songofthetui.co.nz

SONG OF THE TUI LODGE
270 Mackay Pass Rd, RD, Collingwood

email: relax@songofthetui.co.nz
phone: 03 524 8717

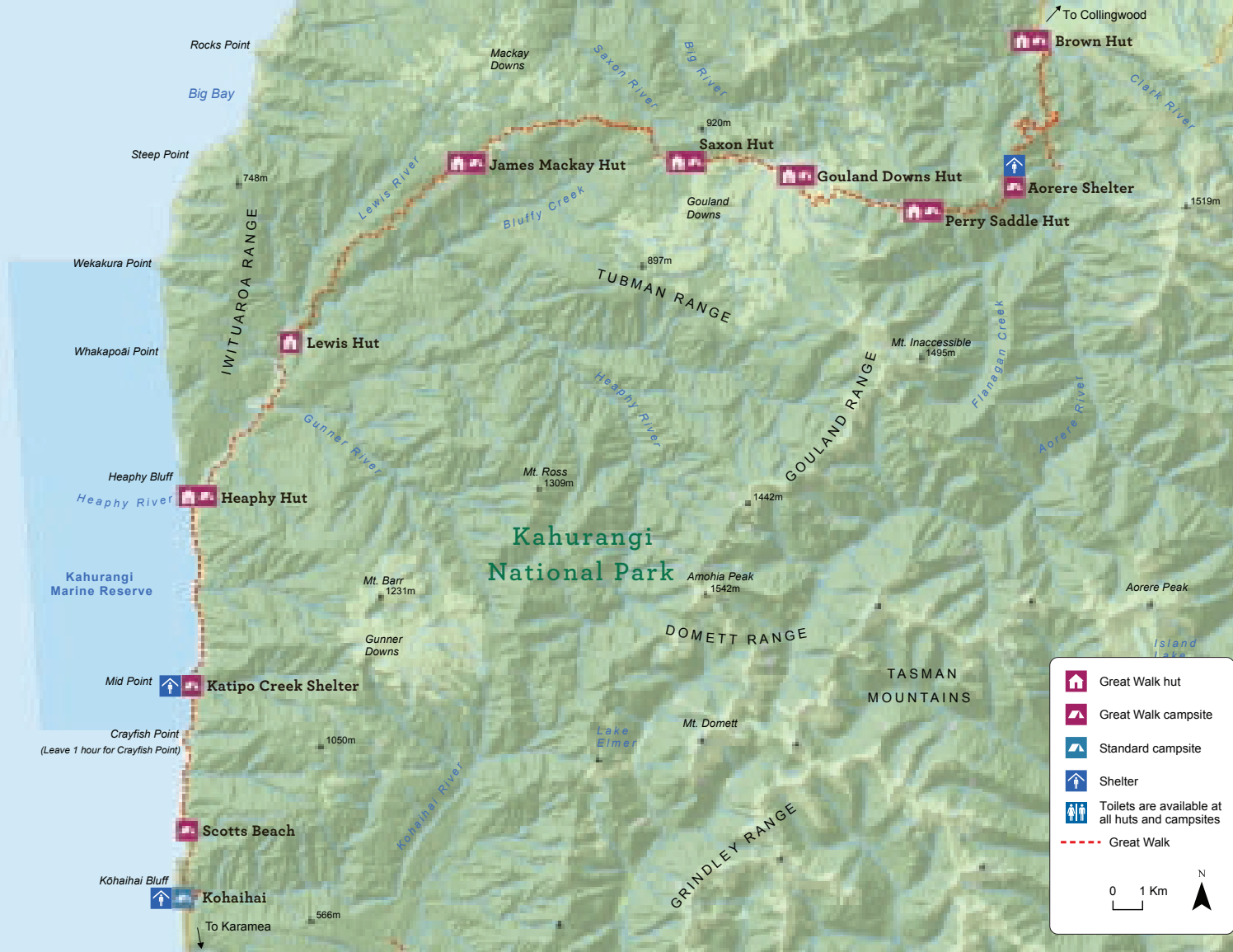
Published by:
Department of Conservation
Marketing Team
PO Box 10420, Wellington 6143
New Zealand

Editing and design:
Publishing Team
DOC National Office
May 2017
R112670

* Prices are accurate at the time of publication.

This publication is produced using paper sourced from well-managed, renewable and legally logged forests.

New Zealand Government



Know before you go

It is important to plan your trip thoroughly to ensure you stay safe, and have a great time. Before you go, know the **Outdoor Safety Code** – 5 simple rules to help you #makeithome.

- 1. Plan your trip.** Travel times vary greatly in New Zealand, so carefully planning your route is essential. Seek local information about what to take, and allow enough time for the journey. Book accommodation, transport and transfers to the start/end of track early.
- 2. Tell someone your plans** – Safety is your responsibility. Leave your intentions – including your trip details and emergency contact information – with a trusted contact. It could save your life if things go wrong. Head to adventuresmart.org.nz for more information.
- 3. Be aware of the weather** – New Zealand weather is very changeable. Plan for the worst, expect the best. Check metservice.com for the most up to date info.
- 4. Know your limits** – Always follow the track markers and signposted tracks. You can expect to walk up to 6 hours a day depending on your fitness level. If you get into trouble don't make a bad situation worse. Think **STAR** – Stop / Think / Assess / React.
- 5. Take sufficient supplies** – With NZ's changeable conditions many hikers are frequently caught out by isolated local conditions. Carry – and expect to use – rain jackets all year round. Take an extra day's supply of food and an emergency shelter. Don't rely on cellphone signal alone for communication. Food and drinks are not available to purchase at Great Walks huts or campsites. Plan to be self-sufficient.

Heaphy Track safety

- Weather on the Heaphy Track is changeable with annual rainfall averaging over 4,000mm. Heavy rain can occur with little warning, and even small streams are dangerous in flood. Be prepared for rain, snow and wind, especially on the exposed sections of the track.
- During winter, adverse weather can damage the track significantly. These areas will be marked by signs and warning tape, although you should check with the Nelson DOC Visitor Centre before your walk.
- The Heaphy valley (between Lewis Hut and Heaphy Hut) can experience severe flooding events. It is not safe to proceed when the track is flooded, and users should take shelter in either the Lewis or Heaphy huts.
- Sections of the coastal track are subject to large wave surges during high tides and rough seas – this may cause the track to be temporarily impassable. When planning your trip, ensure you check tide charts and allow adequate time in case of delays.
- Go to greatwalks.co.nz/heaphy 'Know before you go' section for detailed safety information, and 'What to take' section for a comprehensive gear list.
- Heaphy is a shared track during the mountain bike season between 1 May and 30 November. Bikes must give way to walkers. Check doc.govt.nz/mountain-bikers-code for safety information.

Remember – your safety is your responsibility