

FREE



ROUTE BURN TRACK



Duration: **2–4 days**
Distance: **32 km (one way)**



Great Walks season:
24 October 2017 –
30 April 2018

greatwalks.co.nz

Department of
Conservation
Te Papa Atawhai

ROUTE BURN TRACK

THE ROUTEBURN Track is the ultimate alpine adventure, taking you through ice-carved valleys and below the majestic peaks of the Southern Alps/Kā Tiritiri o te Moana.

A short trip from bustling Queenstown, this Great Walk links Mount Aspiring and Fiordland National Parks in the Te Wāhipounamu – South West New Zealand World Heritage Area. Weaving through meadows, reflective tarns and alpine gardens, you'll be rewarded with spectacular vistas over vast mountain ranges and valleys.

The Routeburn Track can be walked in either direction. The track is well marked and signposted, but some sections are steep and rough and may be muddy and slippery. Poor weather conditions can make this walk challenging, even in the Great Walks season.

This guide describes a 3-day easy hike for independent, non-guided walkers during the Great Walks season (24 October 2017 – 30 April 2018).



Outside the Great Walks season (May to October) walking conditions are more hazardous – see the safety information.

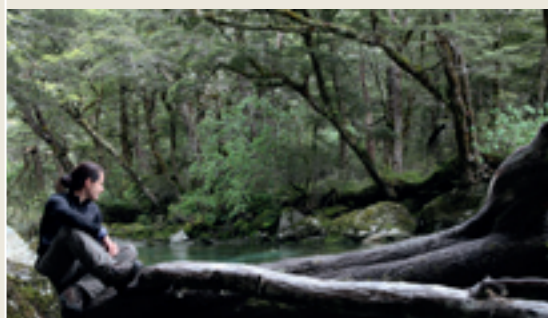
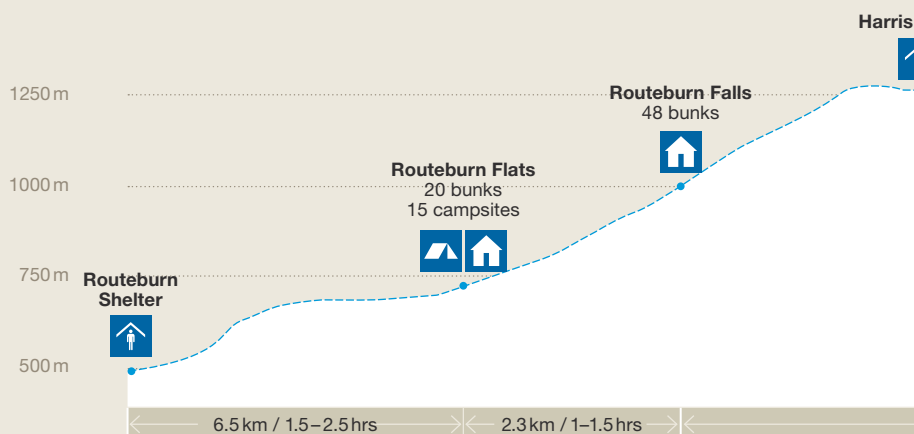


Duration: **2–4 days**
Distance: **32 km (one way)**



Great Walks season:
**24 October 2017 –
30 April 2018**

ELEVATION PROFILE & TRACK GUIDE



Day 1: Routeburn Shelter to Routeburn Falls Hut

3 hours – 4 hours, 8.8 km

The track begins at Routeburn Shelter, gently winding alongside the crystal-clear Route Burn (river). After passing Sugarloaf Stream, you'll climb to Bridal Veil Waterfall and continue above the gorge. A swing bridge leads to open grassed flats, and the Routeburn Flats Hut and Campsite. The track climbs steadily through stunning beech forest, providing views of the Humboldt Mountains. End the day at Routeburn Falls Hut, on the edge of the bushline and close to the impressive Routeburn Falls cascade.

COVER: Lake Harris, Keri Moyle (signsoflife.co.nz)

ABOVE LEFT TO RIGHT: Route Burn, Keri Moyle (signsoflife.co.nz)
Mountain views, Keri Moyle (signsoflife.co.nz)
Lake Mackenzie, Keri Moyle (signsoflife.co.nz)

MAIN PHOTO: Key Summit, Shellie Evans (tikitouringnz.blogspot.co.nz)

Saddle



Lake Mackenzie
50 bunks
9 campsites



Lake Howden
28 bunks



The Divide



11.3 km / 4.5–6 hrs

8.6 km / 3–4 hrs

3.4 km / 1–1.5 hrs

Day 2: Routeburn Falls Hut to Lake Mackenzie Hut

4 hours 30 minutes – 6 hours, 11.3 km

On day 2, you'll climb steadily up the valley, through wetlands and tussock-covered flats, before sidling along the bluffs above Lake Harris to reach the highest point on the track at Harris Saddle/Tarahaka Whakatipu (1,255 metres).

The track then descends and traverses along the exposed Hollyford Face, with expansive views over the Darran Mountains. This section of the track is well-known for its impressive array of alpine plants. A steady descent leads to Lake Mackenzie Hut, set beside the enchanting Lake Mackenzie.

Day 3: Lake Mackenzie Hut to The Divide

4 hours – 5 hours 30 minutes, 12 km

Leaving Lake Mackenzie Hut the track crosses a small flat before climbing to the bushline. A gradual descent then leads past the 'Orchard', an open grassy area dotted with ribbonwood trees, to the impressive Earland Falls (174 metres). The track continues its descent through beech forest to Lake Howden Hut and on to The Divide. A popular side trip (1 hr 30 min) to Key Summit climbs to an alpine wetland with panoramic views over Fiordland mountains and alpine lakes.





Photo: Kerry Weston

Air New Zealand partners with the Department of Conservation to help bring native birds back to the beautiful Great Walks.

AIR NEW ZEALAND 

2



Photo: Keri Moyle (signsoflife.co.nz)

3



Photo: Bernard Spragg

4



Photo: Shellie Evans (tikitouringnz.blogspot.co.nz)

Conservation story

- 1 DOC has teamed up with Air New Zealand, Genesis Energy and the Routeburn Dart Wildlife Trust to further support and expand conservation projects on the Routeburn Track, aiming to 'bring back our birds' and turn up the birdsong along the Routeburn. The rare whio/blue duck, **tuke/rock wren** and mohua/yellowhead, which live and breed in the mountainous headwaters of Lake Wakatipu, are a major focus as stoat plagues have hit their numbers hard. Boosted by the partnership, four times the original number of stoat traps have been laid over 40 km in the Route Burn, Rock Burn and Beans Burn areas, ready for the re-introduction of endangered wildlife into these valleys. The benefits of this are that whio are now being seen in the main stem of the Route Burn.
- 2 Trampers have a choice of four comfortable, well-equipped huts along the track. **Routeburn Falls Hut** is only 3–4 hours from the road end and makes a great overnight trip for families.
- 3 Bird watchers can feast their eyes on **cheeky kea**, tiny rifleman/tititipounamu, rare yellowhead/mohua and paradise shelducks, to name just a few.
- 4 Flower lovers can't miss the largest fuchsia in the world, the **kōtukutuku**, growing up to 12 metres tall. It is especially noticeable between The Divide and Key Summit.

GETTING THERE

The Routeburn Track is accessed by road from the following locations:

- **Routeburn Shelter:** 30 minutes, 25 km drive along a partially unsealed road from Glenorchy.
- **The Divide:** 1 hour 30 minutes, 85 km from Te Anau.

Please note: the road distance between each end of the track is 325 km, so you'll need to arrange transport at each end.

Refer over page for transport options and services.



PLACES TO STAY



DOC operates 4 huts and 2 campsites along the Routeburn Track, which **must be booked well in advance** during the Great Walks season (24 October 2017 – 30 April 2018) to avoid disappointment.



Great Walks huts

\$65 per adult per night; 17 years and under free (booking required).

During the Great Walks season the huts have bunks, mattresses, heating, toilets, gas cooktops, solar-powered lighting and cold running water, and a DOC ranger is in residence. The huts do not provide food, cooking utensils, showers or bedding.

Outside the Great Walks season facilities are greatly reduced and there are no DOC rangers. Bookings are not required, huts and campsites are first come, first served and fees are reduced. See the website for details.



Great Walks campsites

\$20 per adult per night; 17 years and under free (booking required).

Great Walks campsites offer basic facilities including toilets, sinks and a water supply. Routeburn campsites have picnic tables and cooking shelters. Campers may not use hut facilities.

Sign me up! What do I do next?



- 1 Start off at greatwalks.co.nz/routeburn for more information.



- 2 Book your huts and campsites online or at a DOC Visitor Centre.



- 3 Book your transport to and from the track – operators are listed online and in this brochure.



- 4 Buy your food and **pack your bags** – download the Great Walks packing list and make sure you have everything you need for a 4-day independent unguided walk.



- 5 Read up on **safety** and make sure you're well prepared for your journey and changeable weather at greatwalks.co.nz/routeburn. Make sure you have left your intentions with a trusted contact at adventuresmart.org.nz.



- 6 Visit the closest **DOC Visitor Centre** (Queenstown or Te Anau) to pick up your **tickets** and official **track guide**, and chat with the friendly staff for the latest weather forecast and track conditions.



- 7 **All set!** Lace up your boots and get hiking. Don't forget to share your experience on facebook.com/GreatWalks.

**SEASON
SPECIAL**

FREE HOT SHOWERS FOR FREEDOM WALKERS
PHONE 0800 HUMPRIDGE AND QUOTE PROMO CODE: SHOWER

TUATAPERE
Humpridge
track
NEW ZEALAND

**More wilderness
... less people**

3-DAY LOOP TRACK

BOOK NOW: Packages from
Basic Tramping at \$175
to Guided Walking at \$1645



p 03 226 6739 or 0800 HUMPRIDGE (486774)

w www.humpridgetrack.co.nz

e walk@humpridgetrack.co.nz

**WALKING
— THE —
ROUTEburn?**

**TREAT
YOURSELF TO**

**cosy NEW CABINS
& BUNK-ROOMS**

Stay at NZ's first
Net Zero Energy
campground, surrounded
in beauty and comfort

Camp Glenorchy offers beautiful
state-of-the-art, sustainably-designed
cabins, bunkrooms and campsites,
hot showers and fully-appointed cooking
and dining rooms with stunning mountain
views. Enjoy artist-designed features such
as our scheelite campfire shelter stone
mosaic walkways, water features, and native
landscaping that will make your stay inspiring.
Free wifi too! Opening December 2017.

**WARM AND
WELCOMING
ENVIRONMENTALLY
FRIENDLY**



027 700 1882

42 Oban Street, Glenorchy
Book online at
CampGlenorchy.co.nz

**CAMP
GLENORCHY
NEW ZEALAND**

**cruise OR kayak
MILFORD
OR DOUBTFUL
SOUND
...OR BOTH**



Power, Paddle OR Pedal! It might be a
tongue twister but now there's even more
options of how to get your kicks in Fiordland
- sit back and cruise or paddle into the
wilderness or even pedal around Te Anau.

GoOrange!

www.GoOrange.nz

info@GoOrange.nz

0800 24 66 72

Routeburn Track Car Relocation Service

Our service is to move your vehicle
from one trail head to the other.
We also relocate for other tracks.

trackhopper
you walk, we drive



Email: info@trackhopper.co.nz

www.trackhopper.co.nz

Phone: 03 442 8079

Mobile: 021 187 7732

Steamers

Backpackers located opposite Lake Te Anau & DOC
the Steamers Beach Complex is conveniently located within Te Anau
Lakeview Kiwi Holiday Park and Motels.

Range of affordable private or shared rooms available



♥ Single rooms ♥ Dorm rooms ♥ Double & Twins

♥ BBH Member Rates ♥ Linen on beds ♥ Hot Showers

Free Wifi*

Ideally equipped to cater to private groups. Enquire for Rates

P. 0800 483 262 E. res@teanau.info W. www.teanau.info

Doubtful Sound Kayak

**Full Day Sea Kayak Experience
Kayak & Cruise Doubtful Sound**



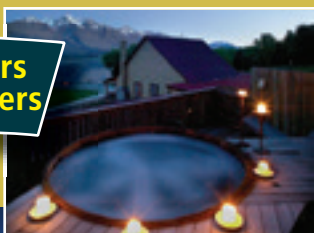
Suitable for all levels of experience
Longest Day Kayak Available - Up to 4 hours kayaking
www.fiordlandadventure.co.nz



Kinloch Lodge
Great hospitality since 1868

- Free Wifi
- Restaurant and self – catering facilities
- Hot Tub
- Shop with tramping supplies
- Boot dryer & laundry facilities
- Complimentary long term parking and luggage storage
- Booking service
- DOC Hut tickets
- Accommodation from bunks to deluxe rooms

**On the Lake Front
between the Routeburn
and Greenstone Tracks**



**\$18 Routeburn transfers
\$15 Greenstone transfers**

Conditions apply



Kinloch Road • Glenorchy • Ph: 64-3-4424900
www.kinlochlodge.co.nz

"A taste of classic country hospitality on the way to Paradise"



Gastro Pub with recently renovated hotel rooms, self-contained backpacker cottage, cabins and camping accommodation available. Internet, off-street parking, luggage storage and ATM. Restaurant, Café, Bar and terraced Garden provide a relaxed atmosphere to have breakfast, lunch or dinner. We specialise in catering for large groups & functions.

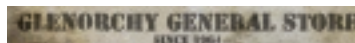


42 – 50 Mull Street,
Glenorchy
T: +64 3 442 9902
E: hotel@glenorchynz.com
www.glenorchynz.com

GLENORCHY INFORMATION CENTRE

On-site Glenorchy Information Centre & Glenorchy General Store provides:

- DOC brochures
- Track & Weather updates
- DOC backcountry hut tickets
- Maps & Tramping supplies
- Groceries and bottle store



Specialists in local information,
we can assist with transport &
activity bookings

Phone: +64 3 409 2049
info@glenorchyinfocentre.co.nz
glenorchyinfocentre.co.nz



167.9384° E 44.8772° S Chalet · Dorms · Campervans

CAP OFF YOUR TIME IN FIORDLAND'S WORLD RENOWNED WILDERNESS

Rejuvenate in Milford Sound.

Milford Sound Lodge offers accommodation options to suit any budget; luxury chalets (en suites with baths...soak sore muscles!) cosy backpacking dorm rooms and Rainforest Campervan Sites

Spend time with us and truly experience Milford Sound. Relax or let us arrange unforgettable activities for you.

BOOK AHEAD TO AVOID DISAPPOINTMENT HIGHWAY 94, MILFORD SOUND
PHONE 03 2498071 bookings@milfordlodge.com
milfordlodge.com

raft walk OR kayak
**ONE DAY OR
MULTI-DAY
ADVENTURES**

Experience a true New Zealand adventure!
Explore our region's wild backcountry on one of our one day or multi-day adventures - raft, kayak, helicopter, walk or do a bit of everything.

Go Orange!

www.GoOrange.nz info@GoOrange.nz **0800 24 66 72**



info&track

Freephone **0800 462 248** +64 3 442 5958
37 Shotover Street, Queenstown infotrack.co.nz

routeburn
rees / dart
greenstone
& caples



PREPARE FOR THE OUTDOORS!
Shopping - Advice - Rentals

www.outsidesports.co.nz

48-40 Milford Road, Te Anau
(+64) 3 249 8195
9 Shotover Street, Queenstown
(+64) 3 441 0074



ROUTE BURN TRACK. HASSLE FREE HIKING.

LET US LIGHTEN YOUR LOAD AND ENHANCE YOUR WALK

CAR RELOCATION

Simply drive your car to the start of the track and we move it to the finish while you walk.

ESSENTIALS PACKAGE

Skip the hassle of organizing transport, food and gear – let us pack your bag & move your car!

PREMIUM PACKAGE

Let us take care of all the logistics of your dream hike – no hassle adventuring at its finest!

Please book ahead to avoid disappointment.

Find out more at:
easyhike.co.nz

e: info@easyhike.co.nz
toll-free: 0800 327 944



Ultimate Hikes
new zealand

ROUTE BURN TRACK GUIDED WALKS

**ENJOY THE ADVENTURE
WHILE WE TAKE CARE OF THE REST**

- 3 days / 2 nights
- Transport to and from the track
- Accommodation in private lodges
- All meals on track
- Friendly and experienced guides

BOOK TODAY
+64 3 450 1940

WWW.ULTIMATEHIKES.CO.NZ

Te Anau Lakeview

Kiwi Holiday Park and Motels

Million Dollar Views of Lake Te Anau & Mountains of Fiordland

Selection of Family & Studio Motels
Lakeview & Parkview options
Backpackers, Tent & Powered Sites
Reunions, Groups & Schools welcome
Car & Bag Storage

FREE WIFI

Holiday Park ★★★★★
2016 EXCELLENCE
tripadvisor

77 Manapouri-Te Anau Highway, Te Anau
P. 0800 483 262 E. res@teanau.info W. www.teanau.info

Fiordland's Track & Transport Specialists for 30 years

TRACKNET

Endorsed Visitor Transport

Tracknet's Bus Timetables link Southern Cities with Great Walks

Bus Connections (All Year*)

- Routeburn Track Bus
- Milford Track Bus
- Kepler Track Bus
- Hollyford & Cycle Trails
- Packages for Day, Multi Day Hikers & groups

Queenstown - Te Anau - Invercargill - Milford Sound

*Charter & on demand services available. Book seats & view prices at our website
P. 0800 483 262 E. res@tracknet.net W. www.tracknet.net

Buckley Track Transport

More convenient times to suit your needs.
Pick-up's and Drop-off's at your accommodation.
Locally Owned and Operated.
We service all major tracks.
Competitive prices.

e-mail: info@buckleytracktransport.nz phone: +64 442 8215
www.buckleytracktransport.nz

Great Walkers

deserve great hostels

**YHA Glenorchy,
YHA Te Anau and
YHA Queenstown**

Affordable comfortable accommodation pre and post Great Walk

yha.co.nz 0800 278 299

Daily Track Transport

Competitive rates offered to fit your timetable and ensure the transport to your tramping experience is hassle free.



Routeburn
Greenstone
Rees/Dart
Queenstown

Glenorchy Journeys is the best way to get from Queenstown Airport to the start of your track. We can meet your flight, drop your bags to your accommodation and pick up supplies en-route to the walking tracks.

We are dedicated to sorting your transportation from start to finish, and everything in-between.

For info and friendly service:
Free phone 0800 495 687
office@glenorchyjournneys.co.nz
www.glenorchyjournneys.co.nz



Glenorchy Journeys

WALKING
— THE —
ROUTEburn?

TREAT
YOURSELF TO THE WORLD-FAMOUS
Full Monty
GELATO SUNDAY



Stop by and indulge in a tasty
homemade bowl of goodness!

At Mrs Woolly's you'll also find healthy takeaway food, fresh-baked pastries, a full range of groceries and supplies including high quality outdoor gear, as well as beautiful gifts and accessories, NZ merino jumpers and blankets, and more.

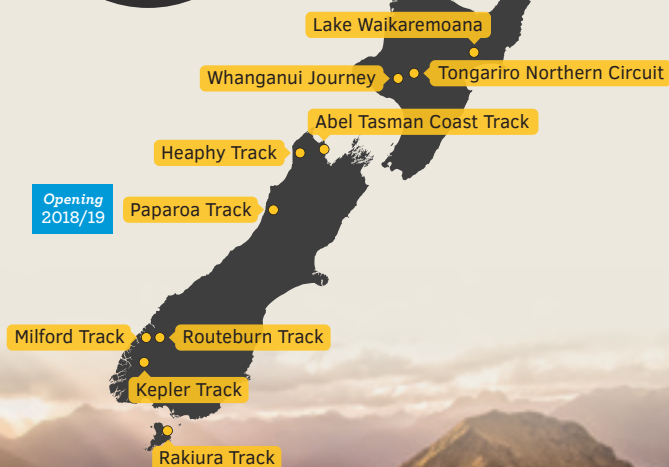


Mrs Woolly's
**GENERAL
STORE**
GLENORCHY, NZ

Open | 64 Oban Street, Glenorchy
July-May | MrsWoollysGeneralStore.co.nz



How many
have you
done?



Kepler Track.
© Daniel Deans

www.adventuresmart.org.nz

TELL
SOMEONE
YOUR
PLANS
IT MAY SAVE
YOUR LIFE



Get Ready, Get Outdoors
ADVENTURE smart
www.adventuresmart.org.nz



DOC Visitor Centres

Call in to your local visitor centre to plan and prepare for your outdoor adventures.

doc.govt.nz/visitorcentres



Published by:
Department of Conservation
Marketing Team
PO Box 10420, Wellington 6143
New Zealand

Editing and design:
Publishing Team
DOC National Office

May 2017

R112670

* Prices are accurate at the time of publication.

This publication is produced using paper sourced from well-managed, renewable and legally logged forests.

New Zealand Government

Know before you go

It is **important** to plan your trip thoroughly to ensure you stay safe, and have a great time. Before you go, know the **Outdoor Safety Code** – 5 Simple rules to help you #makeithome

- 1. Plan your trip.** Travel times vary greatly in New Zealand, so carefully planning your route is essential. Seek local information about what to take, and allow enough time for the journey. Book accommodation, transport and transfers to the start/end of track early.
- 2. Tell someone your plans.** Safety is your responsibility. Leave your intentions – including your trip details and emergency contact information – with a trusted contact. It could save your life if things go wrong. Head to adventuresmart.org.nz for more information.
- 3. Be aware of the weather.** New Zealand weather is very changeable. Plan for the worst, expect the best. Check metservice.com for the most up to date info.
- 4. Know your limits.** Always follow the track markers and signposted tracks. Off-track navigation is not recommended for novice walkers in New Zealand. A good level of fitness is required to walk the track. You can expect to walk up to 7 hours a day depending on your fitness level. If you get into trouble don't make a bad situation worse. Think **STAR** – Stop / Think / Assess / React.
- 5. Take sufficient supplies.** With NZ's changeable conditions many hikers are frequently caught out by isolated local conditions. Carry – and expect to use – rain jackets all year round. Take an extra day's supply of food and an emergency shelter. Don't rely on cellphone signal alone for communication. Food and drinks are not available to purchase at Great Walks huts or campsites. Plan to be self-sufficient.

Routeburn Track safety

The information in this brochure relates to the Routeburn Track in the Great Walks season (24 October 2017 – 30 April 2018).

- This track is not recommended for children under age 10, due to the exposed mountainous environment and often adverse weather conditions. An overnight stay at Routeburn Flats, Routeburn Falls or Lake Howden huts is a suitable family option.
- Fiordland and Mount Aspiring National Parks lie in an area with high rainfall and changeable weather patterns. Cold temperatures, snow, strong winds and heavy rain can occur at any time of the year.
- The Routeburn Track is complex avalanche terrain and the risk of avalanche is present throughout winter and often into December. During the Great Walks season, DOC manages this risk and walkers may be flown (at their cost) over dangerous sections.
- Go to greatwalks.co.nz/routeburn 'Know before you go' section for detailed safety information, and 'What to take' section for a comprehensive gear list.

Remember – your safety is your responsibility



You are strongly recommended **NOT** to attempt this track between early May and late October (outside the Great Walks season). The winter environment in Fiordland is very cold and wet, with ice, snow and short daylight hours. Avalanche-prone bridges across some major watercourses are removed. DOC does not manage hazards such as flooding or avalanches. Walking the Routeburn Track at this time should **only** be attempted by people who are very experienced in the New Zealand backcountry and have navigation, river crossing and alpine skills. Alpine-specific trip planning is critical for you and your group safety. The consequences are severe if not correctly managed.

In addition, **facilities are greatly reduced** – including no gas for cooking, a limited water supply, and no rangers or emergency radio facilities. For more information, see 'Outside the Great Walks season' at greatwalks.co.nz/routeburn.

